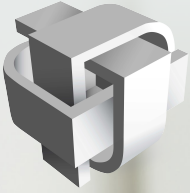




Signature Skin Treatment: Step-by-Step Guide & Patient Discussions



PLYMOUTH
MEDICAL

Authorized Distributor:
PLYMOUTH MEDICAL
135 Plymouth Street #410
Brooklyn, NY 11201
Toll Free: 888-392-5076
sales@plymouthmedical.com
WWW.PLYMOUTHMEDICAL.COM



01

Cleanse, Double Cleanse & Massage

TRI-PHASE CLEANSER™ & CLR FOAM CLEANSER™

Massage into dry skin for 5-10 minutes, before adding water.

If makeup is present, apply TRI-PHASE CLEANSER™ to dry skin, then add water to transform it from a balm, to gel and then milk. Rinse off and pat dry skin.

Tip: Reapply a generous amount of TRI-PHASE CLEANSER™ to dry skin for a luxurious and nourishing massage.

To double cleanse or for problematic skin, apply CLR FOAM CLEANSER™. Add water to create a foaming experience.



Product Spotlight

	TRI-PHASE CLEANSER™	CLR FOAM CLEANSER™
Key Ingredients	Grape Seed Oil, Rice Bran Oil, Vitamin C, Vitamin E, Apricot Kernel Extract.	NMF Amino Acids, Salts, Manuka Honey, Botanical Salicylic Acid.
5 Patient Discussion Points	<ol style="list-style-type: none">1. For best results and minor exfoliation, TRI-PHASE CLEANSER™ needs to be used initially on dry skin. The balm will transform into a smooth gliding gel when gently massaged into the skin. Add water using dampened cotton pads to activate the milk phase.2. This product is particularly effective at removing COVER RECOVER™ (SPF 30 breathable camouflage makeup).3. Continue to use TRI-PHASE CLEANSER™ post-procedure for at least five days.4. It contains naturally occurring grape seed oil, which is high in antioxidants to help protect the skin.5. Rice bran oil is a major ingredient, which is highly regarded in Japan for its anti-ageing properties.	<ol style="list-style-type: none">1. CLR FOAM CLEANSER™ lightly exfoliates the top layer of dead skin cells without stripping hydration or natural oils.2. It is normal to feel a slight tingling when you first start using this product. Sensation will subside as skin adapts and improves.3. This product is an ideal men's shaving foam and cleanser in one.4. It contains the natural botanicals Manuka Honey shown to heal and nourish skin, and Salicylic Acid (derived from the meadowsweet flower), which is very efficient in unclogging pores.5. CLR FOAM CLEANSER™ is included in our PROBLEMATIC SKIN STARTER KIT.

02

Exfoliate

MICRO DERM EXFOLIANT™

Massage MICRO DERM EXFOLIANT™ into skin with light circular motions. Remove with face cloth, Dp Dermaceuticals™ biodegradable cleansing pads or gauze.



Product Spotlight

MICRO DERM EXFOLIANT™

Key Ingredients

Bamboo Powder, Lactic Acid, Shea and Mango Butters, Aloe Vera and Cucumber Extracts, Grape Seed Oil.

5 Patient Discussion Points

1. MICRO DERM EXFOLIANT™ is a cleanser and exfoliant in one.
2. It can be used three days before microneedling to prepare skin, and for five days afterwards to promote cell renewal.
3. MICRO DERM EXFOLIANT™ contains Bamboo Powder, which is rich in the natural mineral silica.
4. A key ingredient is Lactic Acid, which acts as a gentle exfoliant to stimulate cell renewal for brighter, smoother and softer skin.
5. Apply MICRO DERM EXFOLIANT™ to other areas of the body (such as legs) to prepare skin prior to treatments such as laser, microdermabrasion for more effective results.

03

Clay Mask

CLR CLARIFYING MASK™ or RADIANT-C MASK™

Dispense clay mask into bowl and gently brush onto skin. Leave for 5-10mins. Soften with water. Thoroughly remove with ultrasound spatula and warm towel or Dp Dermaceuticals™ biodegradable cleansing pads.

Tip: Use 2 DermapenWorld™ Duo Silicone Applicators and water. Apply gentle circular motions to massage and lift the clay mask.



Product Spotlight

	CLR CLARIFYING MASK™	RADIANT-C MASK™
Key Ingredients	Kaolin and Bentonite Clay, Quartz, Charcoal Powder, Lactobacillus Ferment (Vegan Plant-derived Pre-probiotic), Fruit Extracts Blend.	Kaolin and Bentonite Clay, Vitamin C and Lactobacillus Ferment (Vegan Plant-derived Pre-probiotic).
5 Patient Discussion Points	<ol style="list-style-type: none">1. CLR CLARIFYING MASK™ exfoliates the top layer of dead skin without stripping hydration or natural oils.2. Enriched with botanical extracts for defence against free-radical damage.3. Contains two organic clays that help draw out impurities, toxins, and excess oil yet remains gentle on skin.4. Activated Charcoal works like mini sponges to help decongest skin and pores.5. Continued use is recommended 2-3 times a week to help keep skin clear with its blemish-free properties.	<ol style="list-style-type: none">1. Enriched with potent Vitamin C for intense brightening and antioxidant benefits.2. Contains Vegan Plant-derived Pre-probiotic to help soothe redness and irritation, strengthen skin's integrity, and promote healthy balanced microflora.3. Contains two organic clays that help draw out impurities, toxins, and excess oil yet remains gentle on skin.4. This is a professional strength mask that can be used in clinic or at home. Slight tingling effect is normal. Note: Any alcohol ingredients used are natural plant-derived vegetable fatty acids used as emollient and emulsifier, also ensuring the stability and purity of the natural-based formula.5. Continued use is recommended 2-3 times a week to help keep skin clear and bright.

04

Skin Hygiene

CLINIPREP™

Light spritz of CLINIPREP™ followed by tissue dry. Gently press tissue into skin section by section until dry.



Product Spotlight

CLINIPREP™

Key Ingredients

Sodium Hypochlorite, Phosphoric Acid.

5 Patient Discussion Points

1. CLINIPREP™ offers a safer and more effective antimicrobial skin cleanser compared to previously available formulations.
2. It is incredibly gentle on the skin.
3. It doesn't contain alcohol or any other ingredients that could cause stinging, sensitivity, irritation or dryness of the skin and eyes.
4. While it is deadly to pathogens, such as virus and bacteria, CLINIPREP™ does not interfere with cell regrowth.
5. It is especially beneficial for skin recovery from microneedling, tattooing, ablative laser or chemical peels.

05

Peel

ÜBER PRO™ PEEL

Dispense into bowl and brush evenly onto skin. Leave on for 3-5 mins.



Skip Peel if manual extractions were performed. (Schedule separate appointment for ÜBER Peel).



Product Spotlight

ÜBER PRO™ PEEL

Key Ingredients

Mandelic Acid (25%), Lactic Acid, Resorcinol, Pyruvic Acid, Kojic Dipalmitate, Retinaldehyde, Ferulic Acid, Sodium Hyaluronate, Arbutin, Copper Peptides, Niacinamide.

5 Patient Discussion Points

1. Patients should prepare their skin daily with the prescribed Dp Dermaceuticals™ products in the lead up to a chemical peel treatment and following treatment for the best results and recovery.
2. It's important for patients to not wash their face for 12-24 hours following an ÜBER PRO™ Peel. Likewise in the clinic, there is no need to immediately wash the product off. You can place a HYLA ACTIVE™ 3D SCULPTURED MASK directly over the top.
3. Apply VITAMIN RICH REPAIR™ and COVER RECOVER™ SPF 30 camouflage makeup.
4. Book follow-up appointment in 10-14 days.
5. Upgrade your standard Dermapen Treatments™ with the addition of ÜBER PRO™ peeling.

06

3D SCULPTURED FACE MASK (to calm skin)

HYLA ACTIVE™ 3D SCULPTURED MASK
OR BRITE LITE™ 3D SCULPTURED MASK

Leave sheet mask on for 10 mins.

Tip: Use SSS Roller™ to aid massage.

When taking mask off, remove any excess residue from the peel with the used mask by wiping and pressing excess actives into skin. Perform gentle massage.



Product Spotlight

	HYLA ACTIVE™ 3D SCULPTURED MASK	BRITE LITE™ 3D SCULPTURED MASK
Key Ingredients	HylaFuse™ Hyaluronic Acid, Zinc, Pro Vitamin B5, Copper Peptides, Mineral Ore Ferment, Willow Bark.	HylaFuse™ Hyaluronic Acid, Kojic Dipalmitate, Aloe, Squalane, Chamomile, Superoxide Dismutase (SOD), Peptides.
5 Patient Discussion Points	<ol style="list-style-type: none">1. The mask has been developed to hug the facial contours, jawline and neck, and has innovative loops that fit around the ears.2. This design allows you to sit up while wearing it so you can enjoy some 'me time'—reading, watching TV or listening to music or a podcast.3. HYLA ACTIVE™ 3D SCULPTURED MASK contains pure hydrating Hyaluronic Acid and stimulating collagen building Copper Peptides to leave your skin feeling softer and more hydrated for visibly younger-looking skin.4. Each mask should only be used once.5. The mask works well during or after long haul flights to rehydrate skin; after extreme weather exposure; and as a quick skin pre-event pick-me-up.	<ol style="list-style-type: none">1. Brightens and lightens the appearance of uneven skin tone and discoloured skin.2. This design allows you to sit up while wearing it so you can enjoy some 'me time'—reading, watching TV or listening to music or a podcast.3. BRITE LITE™ 3D SCULPTURED MASK helps reduce the appearance of dark spots, age spots, freckles and sun damage.4. Suitable for those with problematic skin.5. Ideal for: pigmented, aged/sundamaged, acne-prone or postacne Dermapen treatments™.

07

Spritz

CLINIPREP™

Apply light spritz of CLINIPREP™ followed by a gentle tissue dry.



Product Spotlight

CLINIPREP™

Key Ingredients

Sodium Hypochlorite, Phosphoric Acid.

5 Patient Discussion Points

1. CLINIPREP™ offers a safer and more effective antimicrobial skin cleanser compared to previously available formulations.
2. It is incredibly gentle on the skin.
3. It doesn't contain alcohol or any other ingredients that could cause stinging, sensitivity, irritation or dryness of the skin and eyes.
4. While it is deadly to pathogens, such as virus and bacteria, CLINIPREP™ does not interfere with cell regrowth.
5. It is especially beneficial for skin recovery from microneedling, tattooing, ablative laser or chemical peels.

08

Infuse Meso-Glide™ Serum (Optional)

HYLA ACTIVE™, ANTIOXIDANT COCKTAIL™ or MG-EXO-SKIN™

Tip: Use Dermapen™ at superficial 0.3-0.5mm depth to aid infusion.



Remove any serum residue on skin surface by Spritzing with CLINIPREP™ before proceeding to next step.



09

LED Light Therapy Upgrade

LUMAFUSE™ HYDROGEL FACE SHEET MASK

Apply LUMAFUSE™ HYDROGEL FACE SHEET MASK directly onto face before positioning L.E.D. FACE MASK over the top.

Leave on for 10 minutes. Massage potent LUMAFUSE™ serums into skin.

LUMAFUSE™ Key Ingredients; Sodium Hyaluronate, Niacinamide, Camellia Sinensis Leaf Extract, Ginger Root Extract, Licorice Root Extract, Schisandra Extract, Japanese Goldthread, Coconut Oil Extract, Dipotassium Glycyrrhizate, Bergamot, Chamomile, Japanese Cherry Blossom.



10

Refresh Eyes

R.E.R.™ EYE SERUM

Warm serum between fingers. Start by gently dabbing under the eyes, then massage around the eye area.

Tip: Use SSS Roller™ to aid massage around eye area.



Use R.E.R.™ EYE SERUM in other delicate skin areas, such as lips, neck and décolleté. Use 2x SSS Rollers™ for an effective lymphatic drainage massage.



Product Spotlight

R.E.R.™ EYE SERUM

Key Ingredients

Vitamin A – Retinaldehyde, Bakuchiol, Vitamin E, Caffeine, Escin, Centella Asiatica Flower, HylaFuse™ Hyaluronic Acid, Calphasomes.

5 Patient Discussion Points

1. R.E.R.™ EYE SERUM is a powerful combination of rejuvenation properties and anti-ageing antioxidants.
2. It delivers the most active form of Vitamin A (Retinaldehyde), boosted by Bakuchiol available in an eye cream.
3. These powerful ingredients are tolerated in the delicate eye area, due to the encapsulation and dermal delivery system called HylaFuse™.
4. Only a thin layer (1/2 rice grain per eye) needs to be applied to delicate eye area. Use lymphatic massage techniques to improve blood circulation in the area. If irritation occurs, stagger the use to alternative nights or every third night.
5. Ideal treatment to complement VITAMIN RICH REPAIR™ and RETINAL ACTIVE™ to boost skin's collagen and resistance.

11

Intense Hydration

SKIN VENEER™

Massage into face, neck and décolleté. May also be massaged into hands.



Product Spotlight

	SKIN VENEER™
Key Ingredients	HylaFuse™ Hyaluronic Acid, Triglycerides, Wax Esters, Squalane, Cholesterol, Peptides
5 Patient Discussion Points	<ol style="list-style-type: none">1. The ingredients in SKIN VENEER™ replicate the elements found in our skin's natural moisturising factor (NMF).2. It provides intense moisturising for dry to very dry skin, while protecting the skin against harsh environmental conditions.3. As its name implies, SKIN VENEER™ provides a protective 'vener' layer across skin, which locks in the hydrating properties and assists in deflecting free radical attacks.4. It contains the valuable ingredient Squalane, an intense moisturising oil naturally found in the skin that regulates excess oil production and does not clog pores.5. It can help relieve the symptoms of xerosis, dermatitis and eczema, and post-operative dryness.

12

Protect & Shield

BARRIER BODY BUTTER™

Using a generous amount of BODY BARRIER BUTTER™ perform a stimulating lymphatic massage to the face, neck and décolleté.

Tip: This is another opportunity to provide lymphatic massage with 2x SSS Rollers™.



Dry skin with a tissue before proceeding to next step.



Product Spotlight

BARRIER BODY BUTTER™

Key Ingredients

Organic Physical SPF Barrier Zinc Oxide, Ferulic Acid, MTC Coconut Oil, Vitamin E, Aloe Barbadensis Leaf Extract, Chamomile, Lavender, Botanical Flower and Fruit Extracts.

5 Patient Discussion Points

1. Using a broadspectrum SPF 50 combined with potent antioxidants is a key step in protecting skin from free-radical damage.
2. This multi-tasking product both hydrates and nourishes as well as offering preventative SPF protection.
3. Reapply and use on large areas. It's suitable for the face and body.
4. Non-chemical, natural SPF. Hypoallergenic. Gluten-free. Cruelty-free. Free from parabens, oxybenzone, octinoxate, mineral oil. No artificial fragrance. SPF 50/PA++++ UVA/UVB broadspectrum.
5. Apply BARRIER BODY BUTTER™ 20 minutes before going out in the sun, and reapply every three hours during extended periods of sun exposure.

12

Protect & Shield

COVER RECOVER™

Apply the appropriate shade of COVER RECOVER™ or opt for clear.

Use a stippling dabbing method.



Dry skin with a tissue before proceeding to next step.



Product Spotlight

COVER RECOVER™

Key Ingredients

Vitamins A, C & E, Copper Peptides, HylaFuse™ Hyaluronic Acid, Probiotics, Organic Physical SPF Barrier - Zinc, Oxide & Titanium Dioxide.

5 Patient Discussion Points

1. COVER RECOVER™ contains medicating actives that help with the recovery of skin while covering up any blemishes, redness or irritation.
2. This game-changing makeup provides a long-lasting natural coverage and effectively camouflages any redness or irritation that follows a microneedling or other rejuvenation treatment.
3. Containing powerful anti-ageing vitamins, botanicals, peptides, probiotics and Hyaluronic Acid, it also helps with hydrating and accelerating the rejuvenation of skin post-treatment.
4. This multi-tasking product is so gentle and pure, it does not need to be washed off post-treatment.
5. COVER RECOVER™ comes in 11 versatile shades. Apply COVER RECOVER™ 20 minutes before going out in the sun, and reapply every three hours during extended periods of sun exposure.

13

Home Prescription

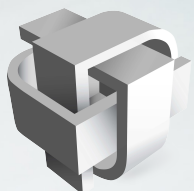
RECOMMENDATIONS

Tip:

1. Explain the Dp Dermaceuticals™ products used within the Signature Skin Treatment and why they were beneficials.
2. Prescribe the recommended Dp Dermaceuticals™ homecare to enhance your patients re-written skin journey.
3. Book in for next Dermapen Treatment™ or Dp Dermaceuticals™ Signature Skin Treatment.



Watch the video for step-by-step instructions.



PLYMOUTH
MEDICAL

Authorized Distributor:
PLYMOUTH MEDICAL
135 Plymouth Street #410
Brooklyn, NY 11201
Toll Free: 888-392-5076
sales@plymouthmedical.com
WWW.PLYMOUTHMEDICAL.COM